



*For more information:*  
North Shore Collaborative  
616 Third Avenue  
Two Harbors, MN 55616  
218-834-8538  
[amy.church@co.lake.mn.us](mailto:amy.church@co.lake.mn.us)  
[www.northshorechildren.com](http://www.northshorechildren.com)

# ***2007 Annual Report***

# ***Table of Contents***

<b>Mission, Vision, and Goals</b>	<b>3</b>
<b>Letter from the Director</b>	<b>4</b>
<b>Organizational History</b>	<b>5</b>
<b>Programs and Services</b>	<b>6</b>
<b>Community Initiatives</b>	<b>8</b>
<b>Financials</b>	
<b>Revenues and Expenses</b>	<b>10</b>
<b>LCTS Earnings History</b>	<b>11</b>
<b>Retained Earnings</b>	<b>11</b>
<b>Joint Powers Board</b>	<b>12</b>
<b>Coordinating Council</b>	<b>13</b>
<b>Open Meeting Schedule</b>	<b>14</b>
<b>Staff Roster</b>	<b>14</b>



# ***Open Meeting Schedule***

**January 10, 2007 8:30 – Noon**

Beaver Bay Community Center, Beaver Bay, MN

**March 7, 2007 9:00 – Noon**

**Annual Meeting-Election of Officers**

Bluefin Bay Resort, Tofte, MN

**May 2, 2007 9:00 - Noon**

Beaver Bay Community Center, Beaver Bay, MN

**July 11, 2007 9:00 – Noon**

Bluefin Bay Resort, Tofte, MN

**September 5, 2007, 9:00 - Noon**

Beaver Bay Community Center, Beaver Bay, MN

**November 7, 2007 9:00 - Noon**

Bluefin Bay Resort, Tofte, MN

## ***Staff Roster***

### **Lake and Cook Counties**

Amy Church, Director

Karen Tucker, Bookkeeper/LCTS Coordinator

### **Lake County**

Mary von Goertz, Elementary Liaison

### **Cook County**

Chip Brown, Kinship Mentor North Coordinator

Lauri Davis/Marianne Marshall, Family Support Coordinator

## ***Mission***

By working together to strengthen families, the North Shore Collaborative ensures that all of our children can grow up healthy and lead meaningful lives.

## ***Vision***

Our vision is a healthy community where children are a high priority. Families, the community, schools, public and private agencies work together as partners to address the mental, physical, emotional, and spiritual health of all our children. Special attention is given to children at risk, and the stigma attached to getting help is eliminated. There is a high degree of community awareness and consensus about the need for collaboration to sustain healthy communities. The North Shore will be an attractive and supportive place to live, work, and raise families.

## ***Goals***

1. To help children succeed in school.
2. To increase buy-in and involvement of under-represented partners.
3. To increase community awareness of the value of collaboration.

## ***Dear Community Partners,***

2007 was a year of maintaining our current programming and initiatives while looking ahead to future transitions. Our well-defined services of family support, mentoring, and school engagement continue to strengthen families' and children's wellbeing through prevention and early intervention.

Further strategies moving us toward our vision included our involvement in making Lake County workplaces smoke-free, expanding the voice of mental health consumers, providing additional vocational-educational opportunities for our youth, and addressing child abuse and neglect prevention.

New evaluation results help shape the Liaison, Family Support, and Kinship Mentor North programs. The results show excellent work is being done with strong family and community partner support. Supporting parents in their efforts to raise healthy and successful children is a common thread.

As these integral programs continue, we are dealing with decreasing revenues which will dictate future transitions for the Collaborative. With a sound financial base currently however, we have time to thoughtfully plan for these transitions while keeping our mission and goals at the forefront. Through a process of community input, partner involvement, and deliberate reflection, we will continue to work together to strengthen families and to ensure that all children can grow up healthy and lead meaningful lives.

We look forward to our continued work with you!

***Amy Church***  
**Director**

## ***Coordinating Council***

Sue Futterer  
Director  
Cook Co. Human Services  
& Public Health  
218-387-3606

Joni Kristenson  
Public Health Nurse  
and Coordinator  
Cook County Public Health  
218-387-3605

Chuck Futterer  
Superintendent  
Cook County School District  
218-387-2271

Roger Linehan  
Director  
Grand Portage Human  
Services  
218-475-2453

Dennis Henkel  
Director  
Lake Co. Human Services  
& Public Health  
218-834-8415

Hal Leppink  
Public Health  
Officer  
Lake County Public Health  
218-834-2352

Mike Duffy  
Public Health Educator  
Lake County Public Health  
218-834-8406

Phil Minkinen  
Superintendent  
Lake Superior School  
District  
218-834-8201

# ***Joint Powers Board***

## **Chairperson:**

Jane Mianowski  
Board Member  
Cook County School Board  
218-387-2767

Jim Gruba  
Executive Director  
Human Development Center  
218-730-2356

## **Vice Chairperson:**

Lorrie Janatopoulos  
Planning Director  
AEOA  
800-662-5711 ext. 259

Terry Fawcett  
Lynne Gagne  
Arrowhead Regional Corrections  
218-726-2653

## **Secretary / Treasurer:**

Scott Larson  
Commissioner  
Lake County Board  
218-834-5005

Janice Hall  
Commissioner  
Cook County Board  
218-475-2307

David Rossetter  
Board Member  
Lake Superior School Board  
218-834-5781

# ***Organizational History***

In the area of serving children, youth, and families, the North Shore Collaborative has a vast amount of experience in planning and providing services, through partnerships with many other child-serving organizations along the North Shore. The primary focus is on prevention and early intervention strategies for strengthening families and ensuring children's success in school.

The North Shore Collaborative (NSC) was formed in 1995 under an agreement by our participating partners: Arrowhead Regional Corrections, Arrowhead Economic Opportunity Agency, Cook and Lake County Boards, Cook County and Lake Superior School Districts, Grand Portage Reservation Tribal Council, and the Human Development Center.

In 1997, a Joint Powers Agreement was formed to establish and govern an integrated Family Services and Children's Mental Health Collaborative for Cook and Lake Counties. In 2001, the NSC completed its incorporation as a private, non-profit 501(c)3 organization yet still with a Joint Powers Agreement.

# Programs & Services

The Collaborative provides a number of services, directly and by contract, through family, school, and community focused programs in the Lake and Cook County communities.

## *Elementary Liaison* ~ Two Harbors

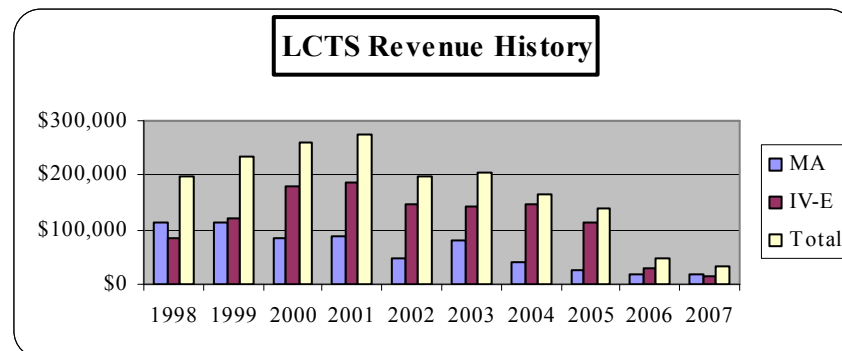
The elementary school Liaison program works with students, grades preK-5. The Liaison connects with the elementary students, parents, school staff, and other community service providers in order to address issues that may be getting in the way of school success. This individualized and supportive attention can help a child get a good start on the path to graduation. The Liaison offers a series of lunch discussion groups for students and also assists with the summer Partners In Education program.

## *Advisory/After School Support* ~ Two Harbors

This position for all 6-8<sup>th</sup> graders at Two Harbors High School, increased the opportunities for a one-on-one relationship between a youth and a caring, knowledgeable, supportive adult, and supports a safe place to learn and grow. The benefits of this program helped youth succeed academically and socially. Due to funding however, this position ended in May 2007.

## *KIDS Plus* ~ Silver Bay

Financial support of the KIDS Plus program aids this popular network of after school activities for youth, and increases the community's connections for providing healthy and safe opportunities.

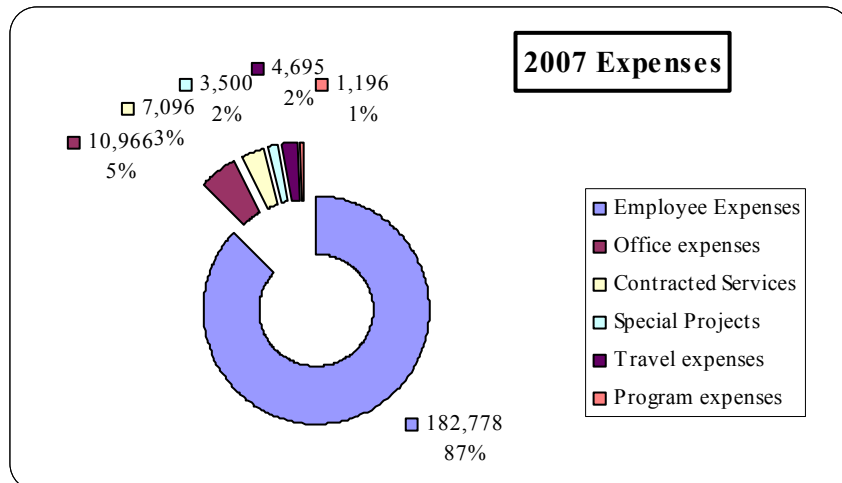
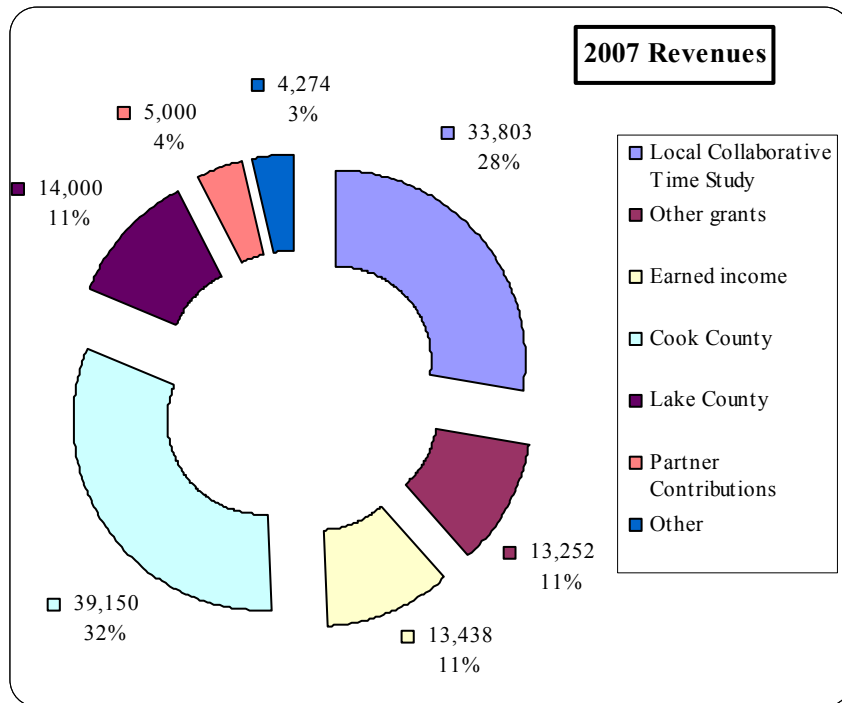


### *Local Collaborative Time Study (LCTS) Notes:*

- LCTS Earnings are based on 2 federal reimbursement funding streams: Medical Assistance (MA) and Title IV-E for Out of Home Placement (IV-E)
- Federal changes to the MA fund took effect in July 2005
- Federal changes to the IV-E fund took effect in Jan 2006
- New materials, IV-E claiming process, and training were implemented in the 3rd quarter 2005—all of which affect earnings

Retained Earnings		
FUND	carry into 2007	carry into 2008
LCTS	213,186	85,987
Earned income	79,538	92,976
Partner Contributions	25,755	30,755
Family Support/Parent Ed.	5,008	15,441
Admin/Special Projects	2,970	9,576
Mentor Program		3,486
Liaison		4,550
Director		9,572
<b>TOTAL</b>	<b>\$326,457</b>	<b>\$252,344</b>

# Financials



## Programs & Services continued...

### Family Support

~ Cook County

Parenting education and family support services are available to parents, grandparents, step-parents, and caregivers to get help for issues they feel are important to them in raising kids, birth through 21. The Family Support Coordinator listens to concerns, provides direct help through a variety of resources and classes, and can suggest other professionals to offer additional help. Some of the programs include ECFE, Follow Along, WIC Clinics, Parents Forever, and Family Connections.

### Kinship Mentor North

~ Cook County

Our new community based mentoring program matches youth, ages 7-14, with positive, caring adult volunteers in order to nurture personal growth, develop social skills, foster school success, and build community. A new Lunch Buddy program in the elementary school also brings adult community volunteers to school on a regular basis. Our goal is to support and inspire young people through consistent, caring mentoring relationships with strong adult role models.

[www.northshorechildren.com](http://www.northshorechildren.com)

~ North Shore

Our website provides specific information and resource links on a number of children, youth, and family issues. As a resource that is available at any time and anywhere, it increases access to information and support for families in our very rural area.

# ***Community Initiatives***

## ***Early Childhood Care and Education***

Energy and attention continue to grow in the area of early childhood care and education, on a local, regional, and state level. Focusing on our youngest children, with a prevention and early intervention lens, is a crucial piece in achieving the long term outcomes we have for all children. This emphasis has been the driving force behind the early childhood initiatives in both Lake and Cook Counties.

The overall goal is for all young children to thrive and have a healthy life of learning, achieving, and succeeding. With this in mind, early childhood teams are gathering information, raising awareness, encouraging discussion, creating a vision, and identifying strategies to improve the wellbeing of young children and their families.

A north shore interagency effort is looking at early childhood services and how best to strengthen and intensify the valuable services already in place. Primary elements of these efforts are aimed at increasing early childhood resources and parents' connection to them, expanded family support opportunities, and focusing on nurturing, attachment, and literacy.

## ***FaCeS: For Children's Sake***

This four year interagency pilot project aims to strengthen families in order to improve the safety, permanency, and wellbeing of Lake County children. This will be done through primary child abuse and neglect prevention efforts with targeted at risk families.

Alcohol and drug abuse is a primary factor in most out of home placements in Lake County. Despite multiple and long term efforts, current interventions don't seem to make much headway in many children's and families' lives. The resources of all community systems are being stretched to a breaking point, with inadequate services and funding being available.

This year's decision to conduct a Community Readiness Survey is an important step to establish baseline data on community standards as they relate to alcohol, tobacco, and other drug use, and the willingness to act to change those standards. Expanded community partnerships with the faith community, media, elected officials, and business also add depth to the project.

FaCeS works to create vital connections among service providers, families, and the community in ways that will build the capacity of our community to care for our children. It is through these added community connections that we will find:

- *Better outcomes for our children*
- *Better support for our families*
- *Better strength as a community*
- *Better use of our resources*

For children's sake, because children deserve better.